

Arndt & Herman

BUILDING PRODUCTS

KnotWood™ Trim Board

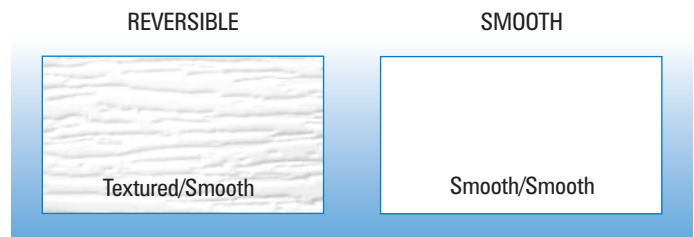


The look and ease of wood with the lifetime performance of PVC

Arndt & Herman® KnotWood™ trim boards provide the solution of a lifetime for any home. Builders and homeowners will be amazed at the appearance and durability of KnotWood. Made from 100% Cellular Vinyl PVC™ these trim boards have the same texture as wood but are moisture proof and will not rot. Whether you are working on new construction or a remodeling project, choose a product that will exceed your expectations in any environment.

- Lifetime Warranty
- Durable PolySelect® surface
- Sheet stock or trim boards
- Moisture proof material
- Does not promote mold or mildew
- Small unit size
- High energy efficiency
- Paintable with 100% acrylic latex paint
- Consistent high density
- Mills and miters with standard tools
- Special 5/4 corners

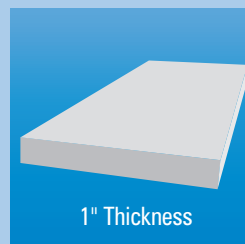
Available surface styles



Lifetime Warranty



Available thickness



Installation instructions – Trim Boards

Cutting:

Arndt & Herman KnotWood can be cut using the same techniques and tools as are used for wood. Carbide tipped blades are recommended.

Routing:

Arndt & Herman KnotWood can be routed using standard carbide tipped router bits. While this process works well by cutting away the skin there is a loss of strength in which the material must not be used in “structural” (load bearing) applications.



Drilling:

Arndt & Herman KnotWood can be drilled in the same fashion as most hardwoods. Drill holes may require the removal of shavings periodically. High Speed Steel Bits are satisfactory for this process.

Fastening:

Arndt & Herman KnotWood can be fastened using 6d or 8d stainless steel or galvanized screws or nails as well as pneumatic fasteners. Apply fasteners approximately 1" - 2" from the edge of the board with support structure (joists) spacing no more than 16" center to center. Fine thread and ring shank are not recommended. Typically it is not necessary to pre-drill. However, there may be situations where this may be necessary, particularly in cold temperatures.

Gluing:

For best results glue all joints of Arndt & Herman KnotWood material with PVC cement. Bond & Fill manufactured by Advanced Trimworks, Inc. may also be used. This will provide a strong bond prohibiting joints from opening. It is highly recommended to splice (scarf) and/or miter all joints. Butt joints are not recommended.

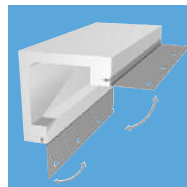


Painting:

Arndt & Herman KnotWood may be painted using a 100% acrylic latex paint. Dark colors should be avoided in areas where the material will be exposed to direct sunlight.

Tips:

- Typically a paintable exterior high quality acrylic latex caulk is recommended
- When adhering Arndt & Herman KnotWood to wood a construction type adhesive (i.e. Liquid Nails LN-901) may be used
- Arndt & Herman KnotWood should always be stored in a flat level position



Manufactured with Royal® Technology

SOLUTIONS

Siding Corner with Nailing Fin
3-1/2" x 3-1/2"
Also,
5-1/2" x 5-1/2"

In Stock	Nom. Width	Actual Dimensions	Length	Pieces Per 1/2 Unit	KR Reversible Item Number	KS Smooth Item Number
3/8" Trim Boards						
	4"	3/8" x 3-1/2"	18'	208		
	6"	3/8" x 5-1/2"	18'	128		
	8"	3/8" x 7-1/4"	18'	96		
	10"	3/8" x 9-1/4"	18'	80		
	12"	3/8" x 11-1/4"	18'	64		
1/2" Trim Boards						
Yes	4"	1/2" x 3-1/2"	18'	156		
Yes	6"	1/2" x 5-1/2"	18'	96		
Yes	8"	1/2" x 7-1/4"	18'	72		
Yes	10"	1/2" x 9-1/4"	18'	60		
Yes	12"	1/2" x 11-1/4"	18'	48		
5/8" Trim Boards						
Yes	4"	5/8" x 3-1/2"	18'	130		
Yes	6"	5/8" x 5-1/2"	18'	80	KR580618	
Yes	8"	5/8" x 7-1/4"	18'	60	KR580818	
Yes	10"	5/8" x 9-1/4"	18'	50	KR581018	
Yes	12"	5/8" x 11-1/4"	18'	40	KR581218	
3/4" Trim Boards						
	3"	3/4" x 2-1/2"	18'	162		
Yes	4"	3/4" x 3-1/2"	18'	117	KR340418	KS340418
	5"	3/4" x 4-1/2"	18'	90		
Yes	6"	3/4" x 5-1/2"	18'	72	KR340618	KS340618
Yes	8"	3/4" x 7-1/4"	18'	54	KR340818	KS340818
Yes	10"	3/4" x 9-1/4"	18'	45	KR341018	KS341018
Yes	12"	3/4" x 11-1/4"	18'	36	KR341218	KS341218
1" Trim Boards						
Yes	4"	1" x 3-1/2"	18', 20'	91	KR540418	KS540418
Yes	5"	1" x 4-1/2"	18', 20'	70	KR540518	KS540518
Yes	6"	1" x 5-1/2"	18', 20'	56	KR540618	KS540618
Yes	8"	1" x 7-1/4"	18', 20'	42	KR540818	KS540818
Yes	10"	1" x 9-1/4"	18', 20'	35	KR541018	KS541018
Yes	12"	1" x 11-1/4"	18', 20'	28	KR541218	KS541218
3/8" Sheet Stock						
Yes	4 ft	3/8" x 48"	8', 10', 12', 18', 20'	16		KS380408 KS380410
1/2" Sheet Stock						
Yes	4 ft	1/2" x 48"	8', 10', 12', 18', 20'	12		KS120408 KS120410
5/8" Sheet Stock						
Yes	4 ft	5/8" x 48"	8', 10', 12', 18', 20'	19	KR580408	KS580408 KS580410
3/4" Sheet Stock						
Yes	4 ft	3/4" x 48"	8', 10', 12', 18', 20'	16	KR340408	KS340408 KR340410
1" Sheet Stock						
Yes	4 ft	1" x 48"	8', 10', 12', 18', 20'	12		KS540408 KS540410

Arndt & Herman®
BUILDING PRODUCTS

For more information, contact 1-866-204-3139
or visit www.arndtandherman.com

Prices and specifications subject to change

