

Accessories Installation Random Rock Outside Corner

1) Attach Starter Strip

1. Measure 3" up the wall from the base at each end of area to be covered and mark.
2. Snap a chalk line between two marked points.
3. This will provide 3/4" clearance between bottom of panel and base or floor. If more clearance is required adjust accordingly.
4. Backset the starter strip from the corner 1-3/4".
5. After allowing proper width for accessories, position starter strip with top edge on chalk line and so that "v" is at bottom of starter strip and away from wall.
6. Attach starter strip with screws on 16" centers or into strong substrate
7. Check starter strip with level.

2) Install Random Rock Outside Corners

1. Corners can be finished with a ledger (requires miter cutting) or Ledger Outside Corner pieces. Top of corner (end with lip on top) should be 1-3/8" below top of flange on top panel. Dry fit if top panel must be cut horizontally.
2. There are 4 designs, alternate design 1,2,3,4 and repeat if going higher up the wall. Be sure and alternate "left" and "right" hand pieces to keep stagger and break up vertical lines.
3. Slide the corner piece down onto the starter strip snugly and screw the top nailing strip where indicated by screw guide points.
4. Slide the second corner over the top of the 1st piece and secure as described above.

3) Using the Converter strip for Random Rock Outside Corner

If the job requires 2 outside corners to be finished with no breaks between them, when working from the left moving right, the final panel piece must be cut and converted to a "male" tongue for proper fit and grout lines to be maintained.

1. Measure the distance from the last panel tongue to the leading edge of the outside corner. Subtract 3/8". Cut the panel to this length.
2. Turn the panel over and measure in from the cut side 5/8". Scribe a line down the back.
3. Set the saw blade for 3/8" depth and follow the scribed line (Fig. 1). Use a box knife or chisel to complete the dado channel in the back.
4. Attach the Converter strip using hot glue, PU adhesive, or super glue gel. Make sure the tongue matches in depth and height (Fig. 2).
5. After curing, fill any gaps between the panel face and converter piece with NextStone grout. Fill from the back side to insure a solid grout line is achieved (Fig. 3). Use putty knife along rock edges to achieve a smooth surface. After it becomes tacky, use touch up paint kit to color the exposed edges and grout (Fig. 4).
6. Attach the piece as if it were a full panel (Fig. 5).

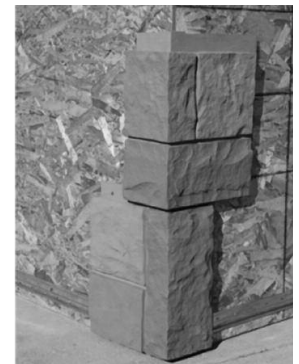
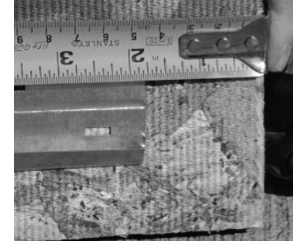
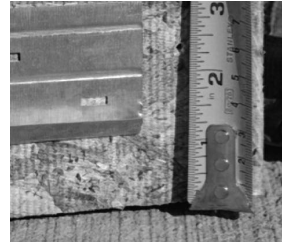


Figure 1



Figure 2

Figure 3

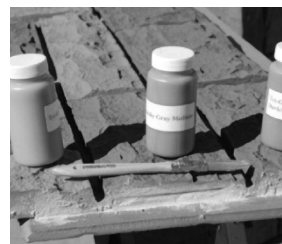


Figure 4

Figure 5

